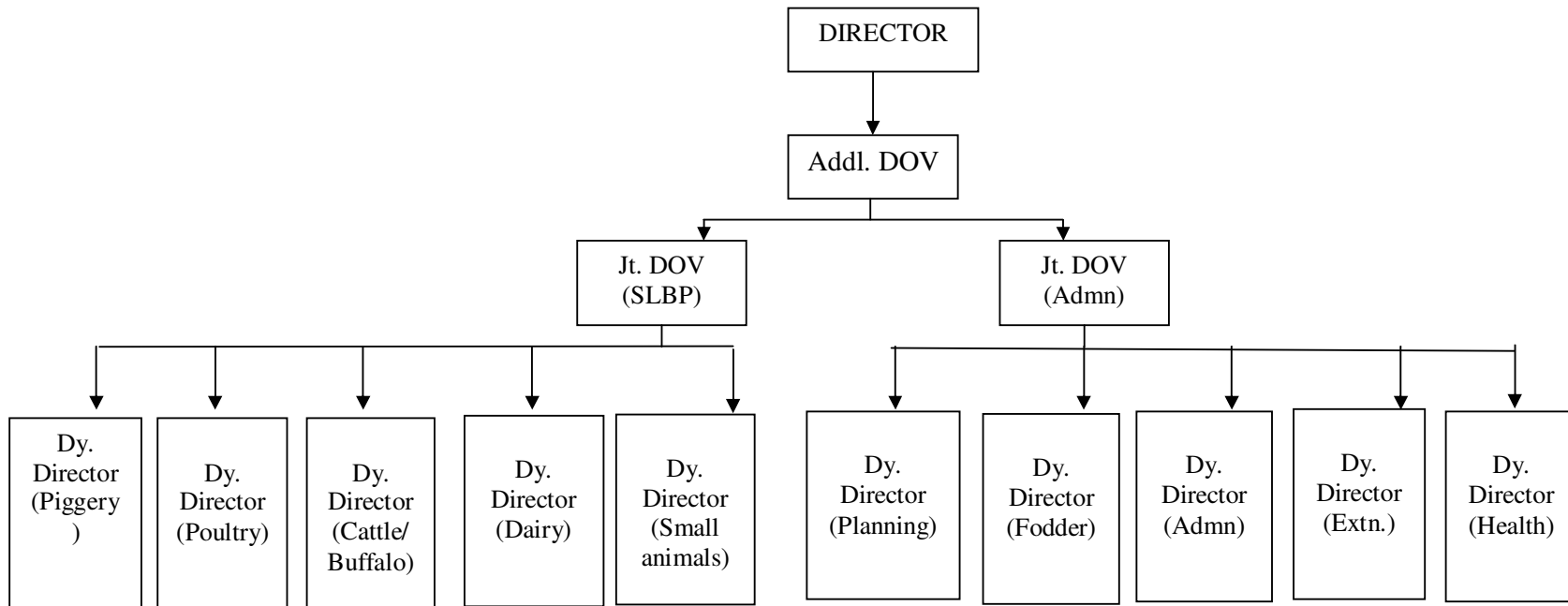


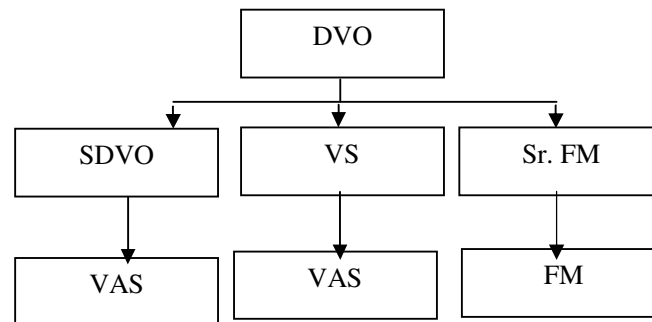
10. Organizational Structures:**Veterinary & A.H.**

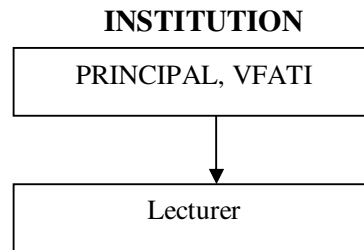
| Veterinary Health Services | Livestock & Poultry and Dairy Development | Others |
|-----------------------------------|--|-----------------------------------|
| Hospitals | Cattle Farms | Nagaland State Dairy Coop (KOMUL) |
| Dispensaries | Piggery Farms | Nagaland State Veterinary Council |
| Veterinary Outposts | Poultry Farms | |
| Disease Investigation Unit | Duck Farms | |
| Quarantine Check Posts | Turkey Farm | |
| Disease Diagnostic lab. | Goat Farm | |
| ELISA lab. | Sheep Farm | |
| FMD lab. | Rabbit Farm | |
| Statistic & Investigation | Pony and Yak Farm | |
| | Feed and Fodder Lab & Farms | |
| | Stockman Centres | |
| | ICDP | |
| | Mithun Research | |
| | Milk Chilling Plants. | |
| | Pasteurization Plants | |
| | Vety & A.H. Extension & Education | |

DIRECTORATE LEVEL



DISTRICT LEVEL





11. Office timing: 9:30 A.M to 4:30 P.M. (Summer)
9:00 A.M to 4:00 P.M. (Winter)

12. Restriction to visitors on specified dates: Wednesday